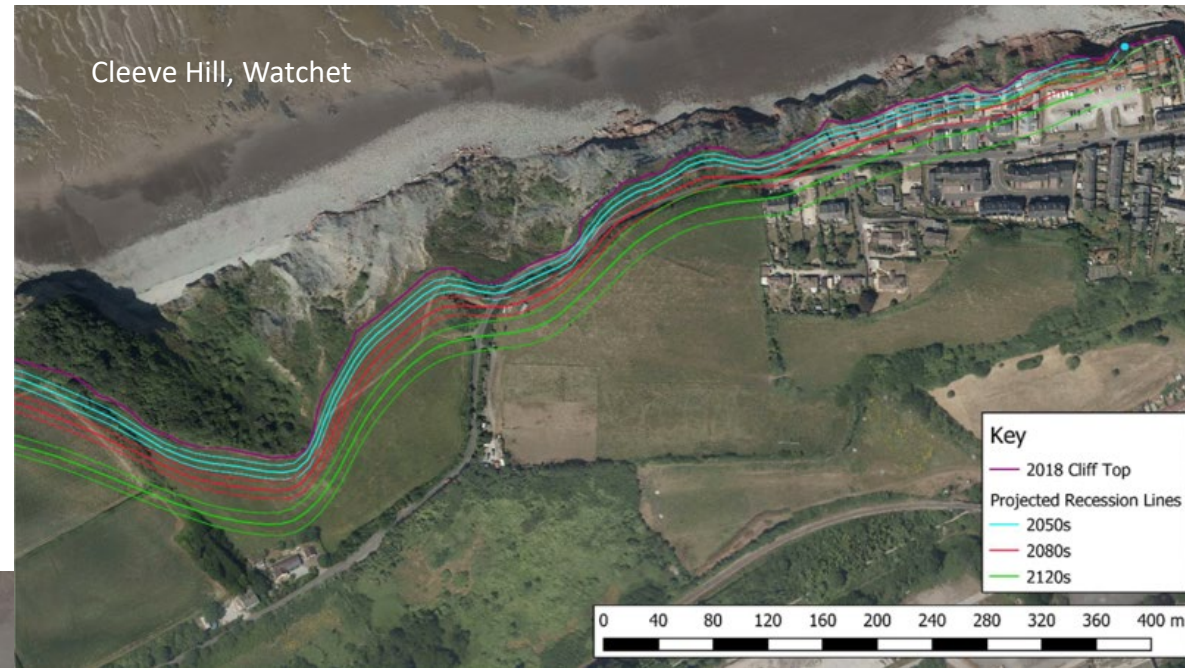
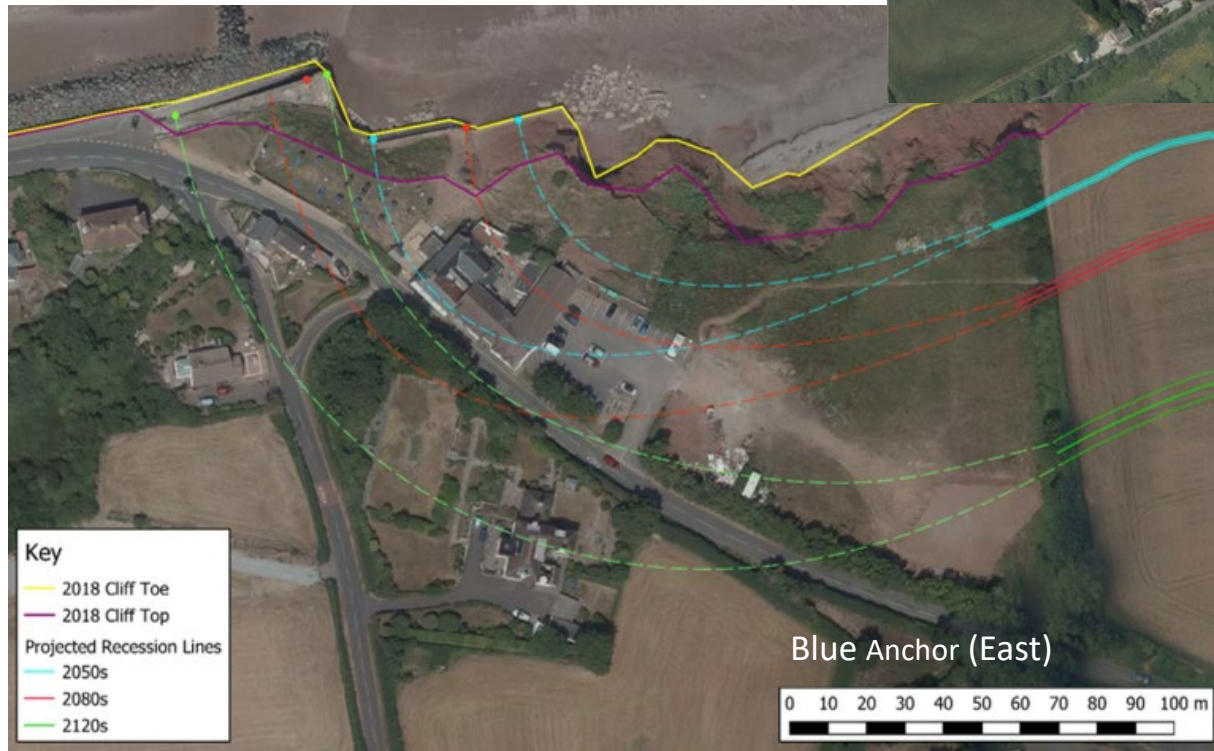


CLIFF EROSION

The coastal cliffs within the study area are actively eroding with further losses anticipated.

Important to quantify how far they can be expected to retreat in the future to understand the impact and the potential benefits of intervention

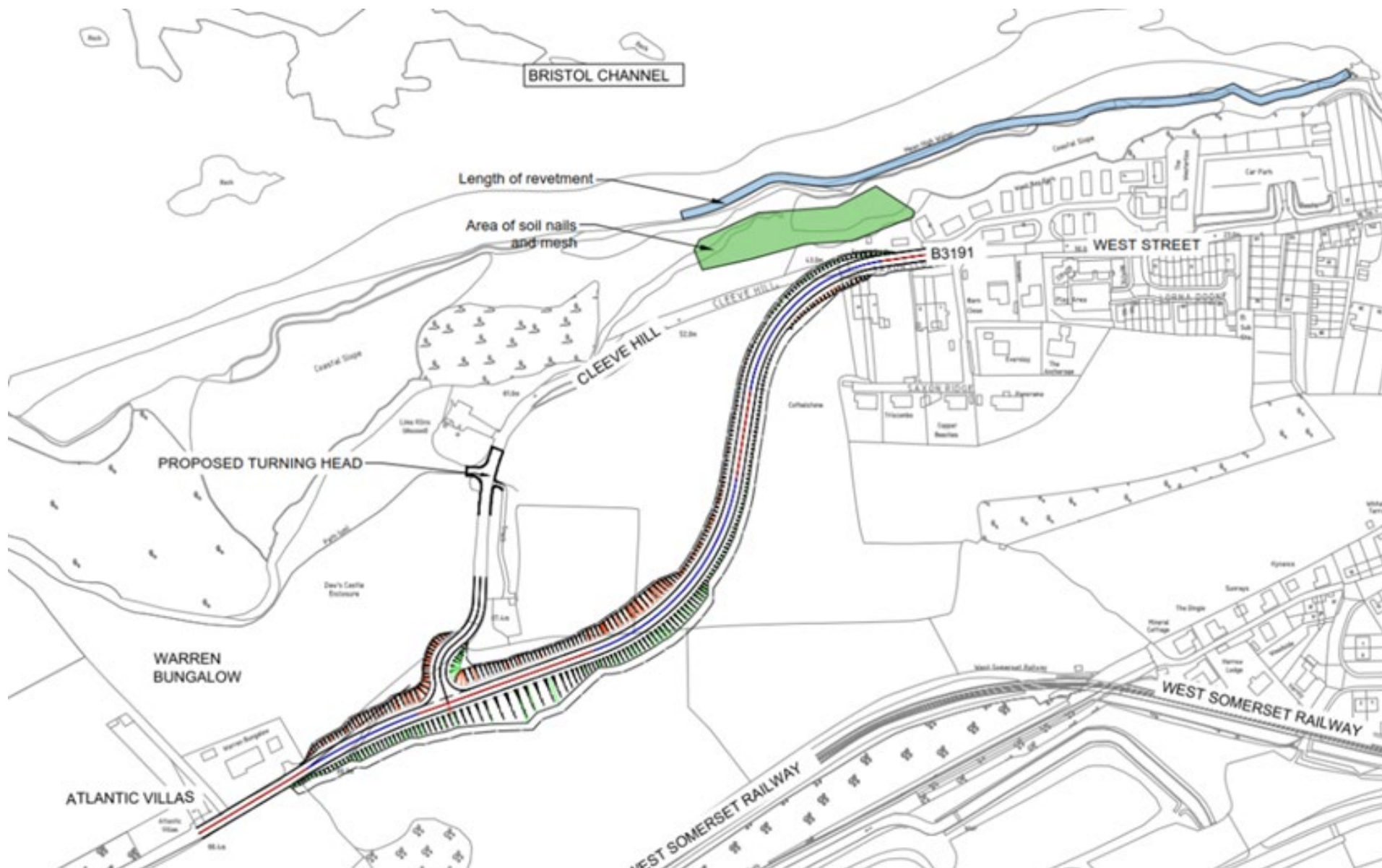


The existing cliff top positions in 2018 are shown in purple, with projected positions for various timescales shown in blue (2050s), red (2080s) and green (2120s).

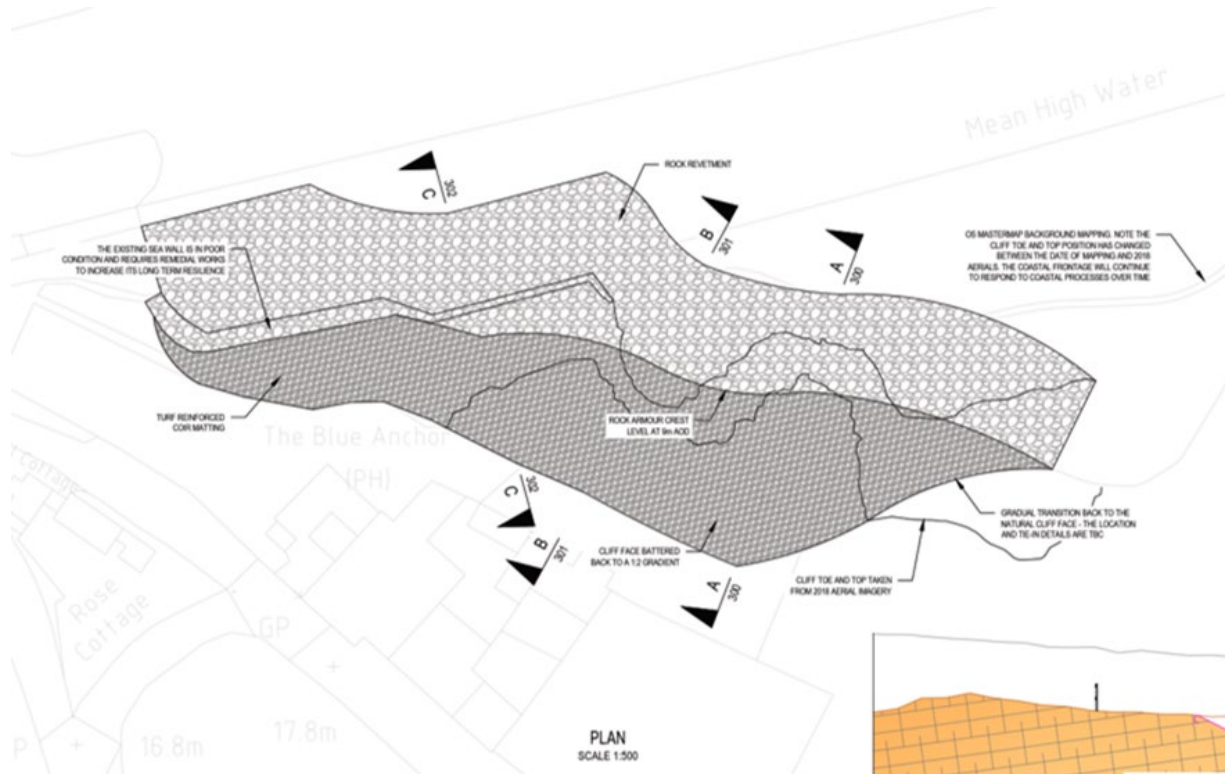
WSP's projections take into account

- Historical cliff recession
- Alongshore variations
- Geology
- Sea level rise predictions due to climate change





Preferred Option 2C (Blue Anchor)



- Rock armour approx. 9m high at the toe
- Regraded slope with turf reinforced coir matting to the slope to stabilise it

